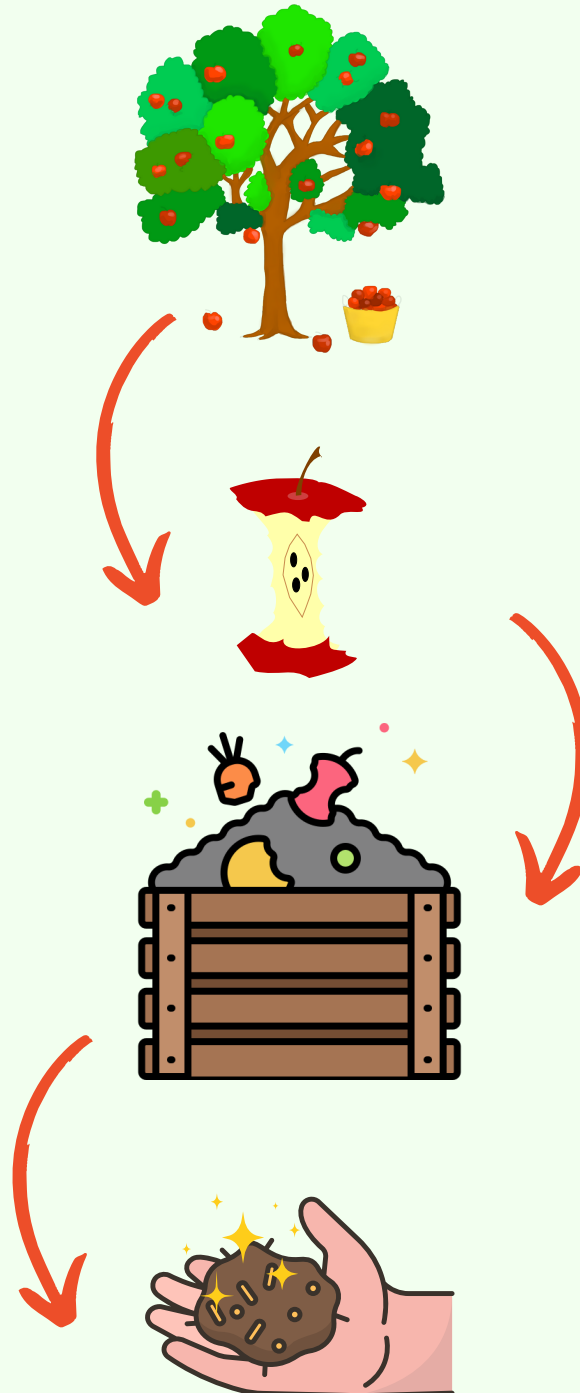


# SOMEONE WANTS YOUR "TRASH"



## COMPOSTING STEPS



Instead of throwing everything away, you may be able to recycle or compost your trash.

## COMPOSTING

Recycling food and other organic waste into compost provides a range of environmental benefits, including improving soil health, reducing greenhouse gas emissions, recycling nutrients, and mitigating the impact of droughts.

## RECYCLING

Recycling is the process of converting waste materials, that would usually be thrown away, into new materials and objects. Recycling waste reduces the amount of harmful materials produced and reduces energy usage, therefore benefitting the environment. Blount County offers a single-stream recycling system.

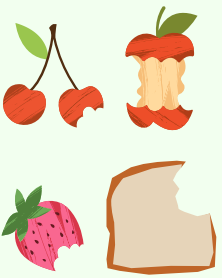
ALL recycling MUST be cleaned before it can be recycled.

## TRASH

Ordinary waste that is not recycled, salvaged, or donated is thrown into the landfill. Once it is put into the landfill, it is leveled and compacted with machinery to make it as small as possible.

# WHAT CAN BE COMPOSTED:

## FOOD SCRAPS



Meat, bones, cheese, eggshells, bread, grains, pasta, beans, nuts, fruits, vegetables, coffee grounds, and spoiled food

## YARD DEBRIS



Weeds, leaves, vines, grass, small branches, flowers, and plant clippings

## Others

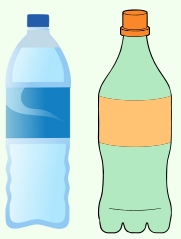


Paper napkins, paper towels, coffee filters, tea bags, and some pizza delivery boxes

**NO:** pet waste, plastic bags, lumber, or large branches

# WHAT CAN BE RECYCLED:

## PLASTIC



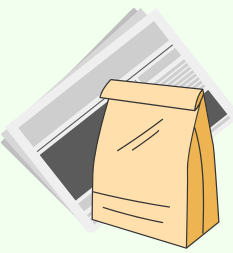
Bottles with a neck, tubs, plant pots, buckets

## METAL



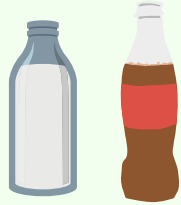
Aluminum, tin and steel food cans, empty and dry metal paint cans, and scrap metal

## PAPER



Newspapers, magazines, flattened cardboard, scrap paper, and catalogs

## GLASS



Glass bottles and jars

Things you cannot recycle in a single stream recycling: Plastic bags and films, aluminum foil, food items, styrofoam, and wax cartons

# WHAT MUST BE TRASHED:

## GARBAGE



Most coffee cups/lids/pods, paper./plastic plates, takeout food wrappers/containers drink cups/straws, painted/stained wood, and garden hoses

## BAG IT OR SEAL IT



Pet waste, cat litter, diapers, sawdust, ashes, and packaging peanuts must be **bagged**. Kitchen fats, cooking oil, and great must be placed in **sealed containers**.

When in doubt, check online for more information about what your recycling center and landfills accept. One helpful resource is Keep Blount Beautiful.